

# Baselight TWO

High performance flexible grading and finishing

FilmLight



Highest quality grading and finishing with ultimate control and flexibility.

## A powerful multi-role system

Baselight TWO is a powerful multi-role system, able to handle a very wide range of grading and finishing projects across the entire gamut of motion-picture post-production. From feature films to commercials and from broadcast TV to online music videos, Baselight TWO delivers maximum quality and performance.

When it's not being used for complex creative grading work, advanced shot grouping capabilities and comprehensive format support, combined with audio syncing tools and metadata burn-ins, enable you to run Baselight TWO as an effective transfer unit for all your digital dailies.

## Total support for demanding workflows

Baselight TWO comfortably supports feature films and high end production work using the latest digital acquisition formats such as Sony F65, ARRIRAW and Red Epic, as well as uncompressed high dynamic range frame sequences from VFX, animation and film scanners.

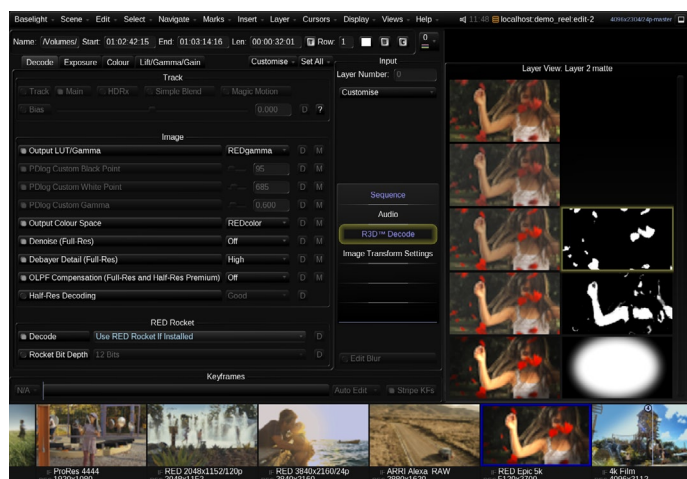
For broadcast TV work and general HD and SD projects Baselight TWO reads and writes compressed formats with professional codecs such as ProRes and DNxHD, as well as allowing you to work directly with most of the popular Quicktime, MXF, mpeg and AVI formats found in today's post-production workflows.

## A completely native approach

Powerful hardware and highly optimised software allow you to work directly from native 'raw' camera footage by removing the need to transcode input media, and an advanced caching system enables you to work in real-time without having to use lower resolution proxies. All types of source footage can be combined without restriction in the same timeline giving you total flexibility and freedom in the way you work, and because none of the input material needs to be converted you also save a lot of time and disk space.

## Uncompromising quality and performance

Baselight TWO combines the latest GPU technology, capable of supporting HDR/EXR and 4k workflows, with powerful Linux-based software to achieve the highest levels of quality, performance and reliability.



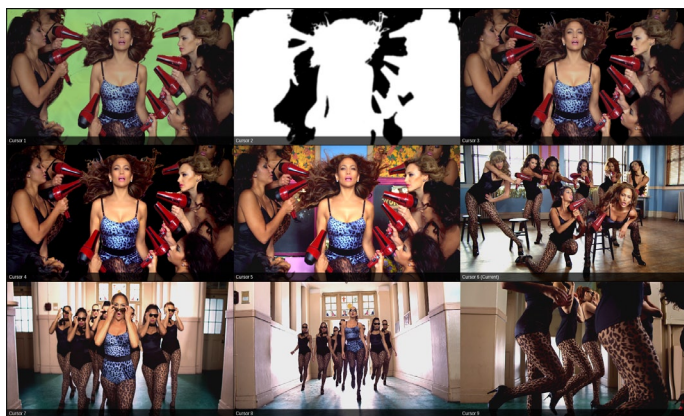
Combined native footage timeline and RAW decoding controls

## An intuitive and fast set of tools

Baselight TWO provides you with a comprehensive set of tools allowing you to freely manipulate your images in any way you choose. You can work in different colour spaces such as RGB or YCrCb, with track-balls, rings, knobs, sliders buttons and curves, or mix them all together. The full range of primary and secondary grading controls, keyers, soft-edged bezier shapes, external mattes, filters and image combining options helps you rapidly achieve the exact look you are after.

### The power of nine

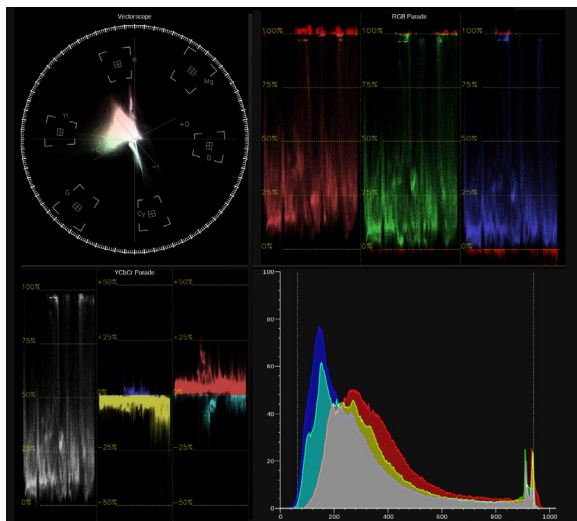
Up to nine timelines from up to nine separate jobs can be open simultaneously and the multi-view display facility allows you to see and play back images from up to nine of these all at the same time. Simply put, this allows you to quickly and easily make direct comparisons and copy looks between different shots and scenes, either within a single project or between completely separate projects.



Multi-view display showing green-screen overlay

### Built-in scopes

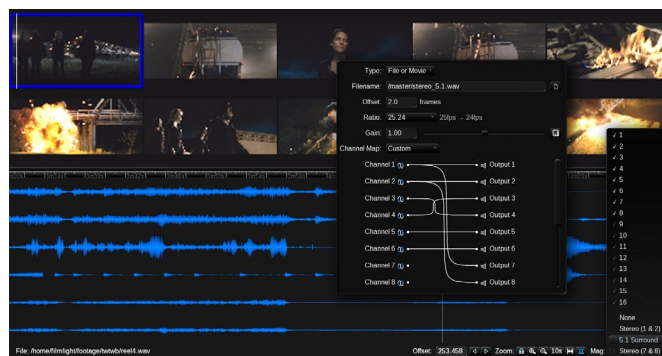
A full range of precision scopes can be opened as floating windows or docked within the user interface to help you accurately control the content of your image and ensure that your final deliverable stays within legal limits. Scopes can be used in any combination and work interactively with the 'pick' function allowing you to take accurate measurements directly from your images.



Built-in precision scopes and histogram

### Integrated multi-channel audio

Up to eight audio channels can be monitored via the digital audio outputs enabling playback of your project with a full surround-sound mix, without having to leave the grading environment. Support for audio stems, basic level control, syncing tools and audio waveforms on the timeline provide you with all the tools you need to ensure a perfect preview with sound.



Audio waveforms and output routing panel

## Extensive and flexible user interface

The user interface, which is driven by its own powerful host processor, supports up to three displays providing you with direct access to more tools, thumbnail galleries and important information within your project. Keyboard shortcuts enable instant recall of preset layouts allowing each user to set up fully customised UI workspaces containing all the tools they need for specific operations.



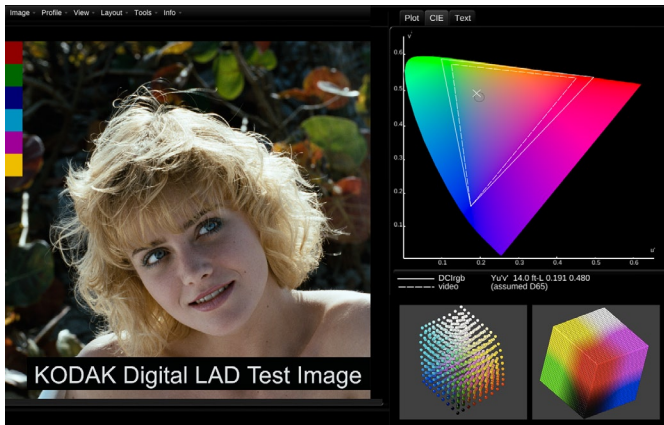
Blackboard 2 grading control surface

Baselight TWO comes with Blackboard 2, our flagship control surface, combining the ultimate in usability and style with total flexibility. Each button contains a high resolution full-colour screen enabling key-top legends to change dynamically according to the current operation. This technique also supports the display of labels in a wide variety of fonts, languages and alphabets.



## Built-in Truelight

Truelight is recognised as one of the leading colour management systems and is employed by thousands of users across the world. The integrated Truelight system ensures accurate conversion between colour spaces providing a true what-you-see-is-what-you-get output preview, and includes tools which enable you to calibrate your displays and create customised look up tables for any specific workflow.



Truelight colour management tools

## Integration and workflow management

The Baselight Cloud provides a 20gigabit network fabric via dual-bonded 10gigE interfaces, allowing systems to share material at ultra-high speeds and enabling the real-time playback of 4k material between multiple Baselight systems. Job data and media can easily be exchanged with other Baselight systems including Baselight Assist and Baselight for Final Cut Pro.

Ethernet, Infiniband and fibre-channel interfaces allow high-speed connections to be made to NAS, SAN and other systems outside the Cloud network and direct Avid Unity workflow integration is supported via an optional Baselight Kompressor interface.

Projects which originate in an Avid or Final Cut Pro environment can be returned directly to those editing systems complete with modified AAF or XML lists retaining all original metadata and enabling a seamless on-line finishing process.

### Baselight TWO Options

#### 10gigabit Ethernet interface

Available with either Cx4 or dual SFP+ ports for connection to Baselight Cloud, Kompressor and other systems.

#### Kompressor

Additional hardware unit enabling direct connectivity to Avid Unity and Avid Unity ISIS shared storage systems.

#### Fibre-channel interface

For connection to SAN storage systems.

## Stereo 3D

Baselight TWO was designed to make working in 3D as easy as working in 2D. The fully automated Stereo Geometry Fix tool combined with a range of special 3D display modes ensure a quick and painless stereo 3D experience. Powerful features such as one-click convergence adjustment and our innovative StereoGrade allow you to make artistic changes to the 3D appearance of a shot quickly and effectively at any point in the workflow.



Before and after one-click convergence adjustment

## Conforming and editing

Baselight TWO incorporates an intelligent conform engine capable of rapidly searching and selecting shots from hundreds of thousands of files spread across multiple source locations. Support for EDL formats including CMX, Avid AAF and Final Cut XML combined with the ability to read metadata from all supported file formats greatly simplifies the conform process. Baselight TWO also provides powerful shot sorting and editing tools allowing you to re-order and trim shots in the timeline.

## Support and training

FilmLight has built up a strong and friendly user community through working closely with customers and other members of our industry for many years. Our renowned customer support offers you not only global follow-the-sun telephone and email contact directly with our product engineers, but also provides project advice, training, installation and expert consultancy services.

#### Restoration tools (software licence)

Video repair and restoration tools.

#### Decoder Pack 1 (software licence)

Enhanced and additional decoding support for certain MXF and other format media files.

#### Stereo 3D option (software licence)

Additional tools for 3D stereo workflows plus support for professional 3D stereo HD-SDI output monitoring modes.

## Key features

- » Integrated 36TB\* bus-attached RAID 6 storage
- » Blackboard 2 grading control surface
- » Separate user interface host processor with support for up to three UI displays.
- » Fully customisable user interface workspaces
- » Play back and grade raw digital camera footage directly from the timeline with no transcoding.
- » Freely mix all resolutions and formats (including native camera formats) within the same timeline
- » Unlimited, GPU accelerated 'inside/outside' grade and effect layers with unlimited soft-edged Bezier shapes
- » Apply grades using intuitive RGB and YCrCb controls; RGB/HSL curves and advanced hue-shift functions.
- » Automatic background rendering and high-speed disk caching for instant real-time playback
- » Powerful filters and image improvement tools including de-grain, de-noise and de-spot
- » Comprehensive EDL support including CMX, Avid AAF and FCP XML.
- » Built-in high precision scopes and histogram
- » Fast and accurate point and area-based auto trackers for shapes and image stabilisation
- » Integrated Truelight Colour Management System
- » Per-shot and scene-based audio with multichannel monitoring.
- » Exchange projects directly with other Baselight systems and platforms via a high-speed cloud network.
- » HD/SD-SDI/3G video ingest and playout with embedded audio and full deck control
- » Simplified bidirectional project exchange between Baselight and Avid/FCP editing systems through extensive AAF/XML and native media support
- » Total compatibility with other Baselight systems including Baselight Assist and Baselight Editions, plus easy integration with other systems and workflows.

\* Actual formatted storage capacity

## Physical specifications

### Master unit

Chassis = 5U 19" rack-mount

Dimensions (WxHxD) = 482x220x721mm (19x8.7x28.4")

Total Weight = 50kg (110 pounds)

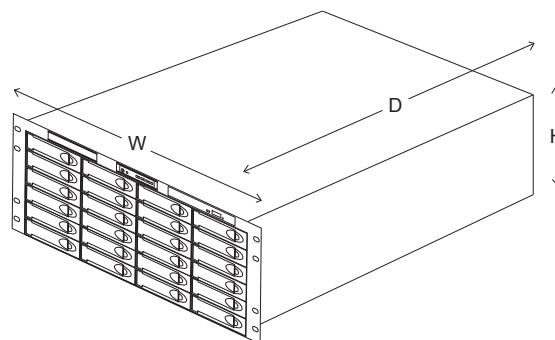
Power consumption = 100-240V, 14A (Max @ 110V)

Heat output = 2kW (6824 BTU/h)

### User interface host PC

Dimensions (WxDxH) = 440x150x330mm (17.3x5.9x13")

Power consumption = 100-240V, 5A (Max @ 110V)



### Head Office & EMEA

London, UK

t: +44 20 7292 0400

f: +44 20 7292 0401

### Americas

Los Angeles, CA, USA

t: +1 (323) 785 1630

f: +1 (323) 785 1649

### Asia Pacific

Singapore, SG

t: +65 9670 3283

f: +65 6234 1575

### Asia Pacific

Auckland, NZ

t: +64 (9) 294 9152

f: +64 (9) 294 9128

[www.filmLight.ltd.uk](http://www.filmLight.ltd.uk)

Northlight, Baselight and Truelight are trademarks of FilmLight Ltd.

Other products that are referred to in this document may be either trademarks and/or registered trademarks of the respective owners. The publisher and the author make no claim to these trademarks.

© FilmLight 2012

